

LIAM COURT TENTATIVE MAP

Exhibit 3

APPLICANT

SERALIAM, LLC
C/O COLIN PEARS
3690 RANCH CREST DRIVE
RENO, NEVADA 89509

ENGINEER

TEC CIVIL ENGINEERING CONSULTANTS
9437 DOUBLE DIAMOND PARKWAY, SUITE 17
RENO, NEVADA 89521

SHEET INDEX

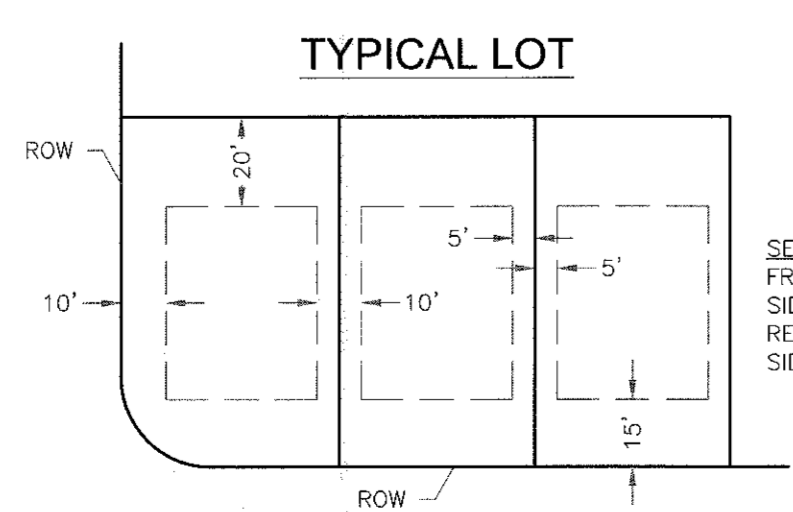
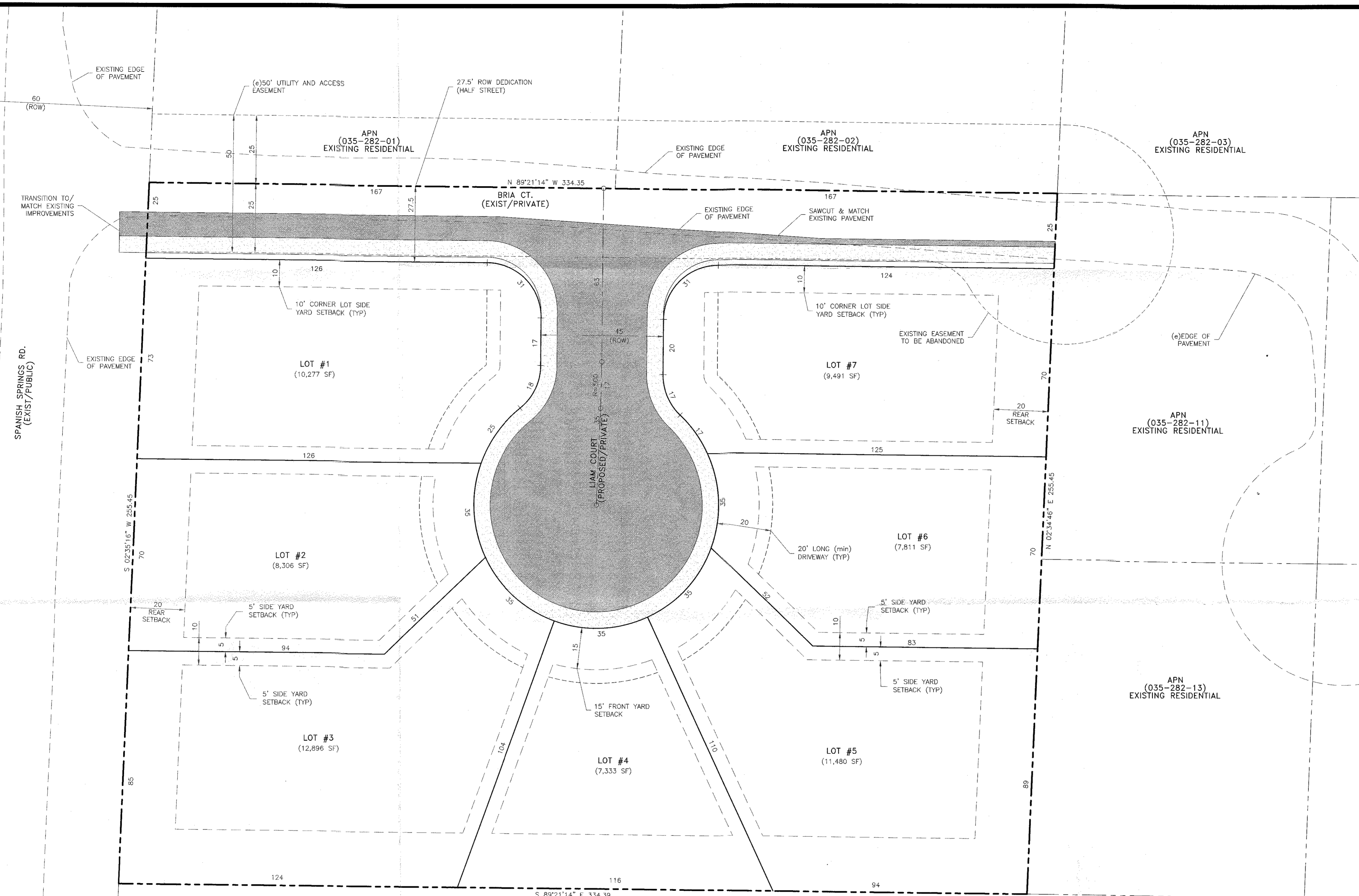
- 1 PRELIMINARY SITE PLAN
- 2 PRELIMINARY GRADING & UTILITY PLAN
- 3 PRELIMINARY CROSS SECTIONS

PROJECT DATA

TOTAL NUMBER OF LOTS	7
LOT AREA	1.55 ACRES
RIGHT-OF-WAY/ COMMON AREA	0.41 ACRES
OPEN SPACE	0.00 ACRES
TOTAL SITE AREA	1.96 ACRES
SMALLEST LOT SIZE	7,333 S.F.
LARGEST LOT SIZE	12,896 S.F.
AVERAGE LOT SIZE	9,656 S.F.

UTILITY DATA

CABLE	CHARTER COMMUNICATIONS
ELECTRIC	NV ENERGY
GAS	NV ENERGY
SANITARY SEWER	CITY OF SPARKS WASTEWATER PLANT
SOLID WASTE	WASTE MANAGEMENT
TELEPHONE	AT&T
WATER	TRUCKEE MEADOWS WATER AUTHORITY



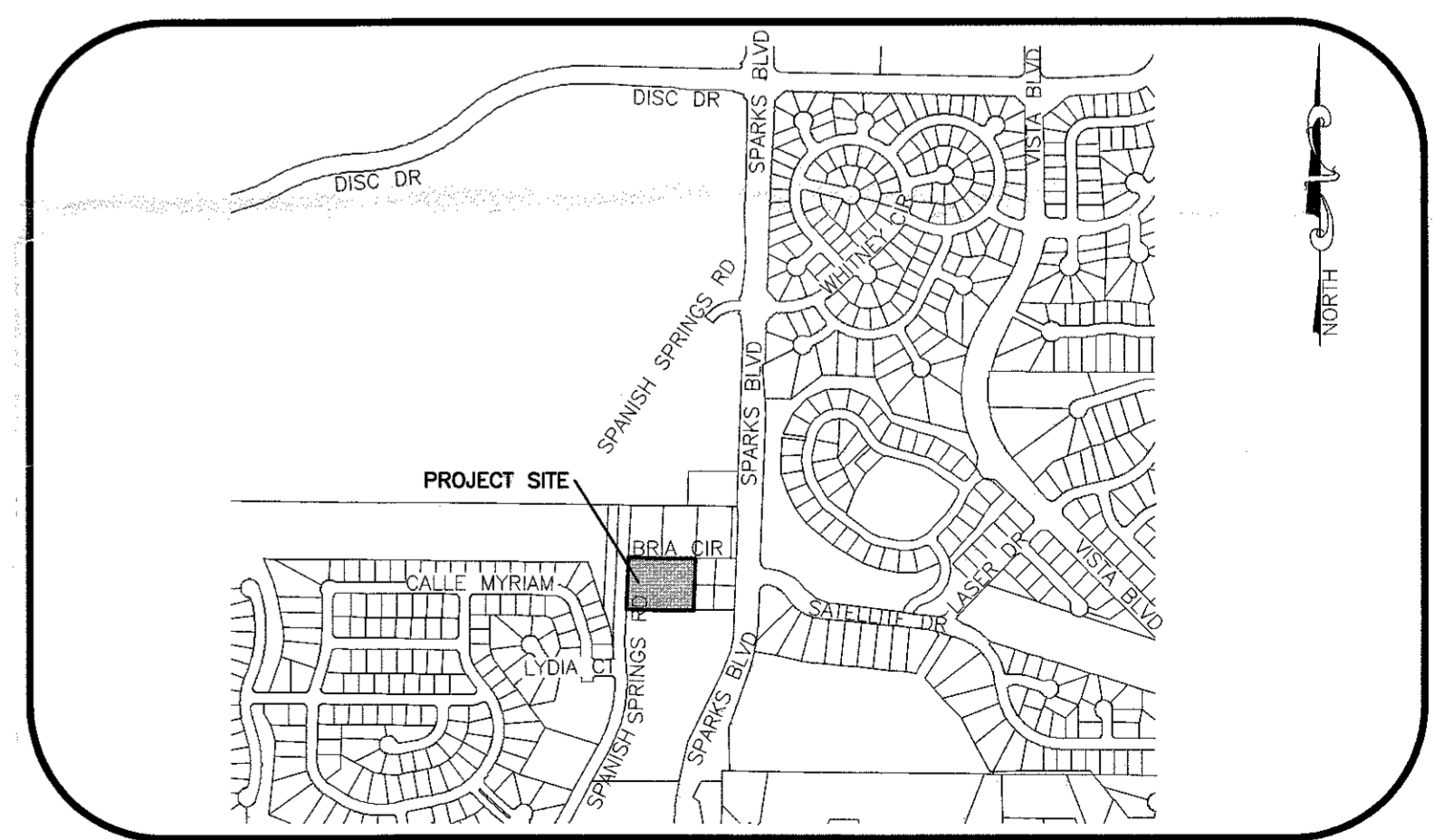
LEGEND

	PROPERTY BOUNDARY
	A.C. PAVEMENT AREA
	CONCRETE AREA
	PROPOSED LOT LINE
	SETBACK LINE
	PROPOSED LOT NUMBER & LOT AREA

ENGINEER'S STATEMENT

THESE FIGURES (FIGURE 1 OF 3 THROUGH FIGURE 3 OF 3) HAVE BEEN PREPARED IN ACCORDANCE WITH ACCEPTED ENGINEERING PROCEDURES AND GUIDELINES, AND WILL BE IN SUBSTANTIAL COMPLIANCE WITH APPLICABLE STATUTES, COUNTY ORDINANCES, AND COMMUNITY DEVELOPMENT CODES WITH FINAL DESIGN.

JASON A. GILLES, P.E. P.E. #16019



VICINITY MAP

